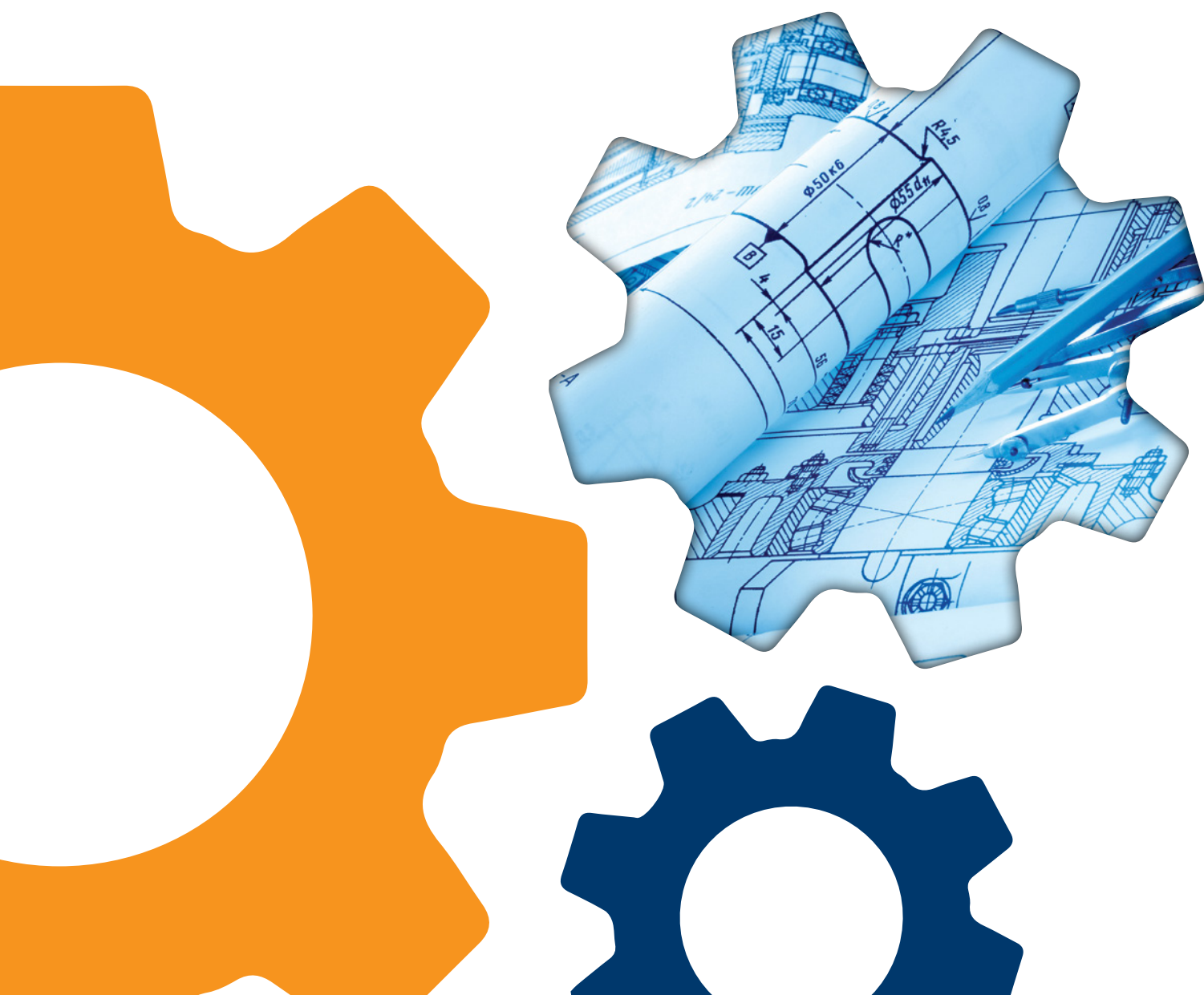


# TEE

TECHNICAL  
CHAMBER  
OF GREECE





# ROLE AND OBJECTIVES

The **Technical Chamber of Greece (TEE-TCG)** was established in 1923. It is a public legal entity, with an elected administration. Its headquarters are in Athens and has branches in 17 geographical regions. All qualified licensed engineers in Greece are registered members of the Technical Chamber of Greece. According to official data in January 2016 TCG had 104,444 active members and 21,937 retired honorary members.

TCG aims at developing Science and Technology in sectors related to the disciplines of its members, for the economic, social, and cultural development of the country, in accordance with the principles of sustainability and environmental protection.

## 9 Areas of Engineering Specialization:

- Civil Engineer
- Mechanical Engineer
- Rural and Surveying Engineer
- Mining and Metallurgical Engineer
- Electronic Engineer
- Architect Engineer
- Electrical Engineer
- Chemical Engineer
- Naval Engineer

The Technical Chamber of Greece is the official adviser of the State on all technical matters. In particular it:

**Studies**, on its own initiative or upon request, by itself or in coordination with other scientific institutions, any technical, economic or development matter that is of interest to society. It also expresses official opinion on legislative issues on these matters.

**Advises** on issues within its competence, upon request by the authorities, or other institutions of the public sector or unions.

**Collects** statistical data about the engineering workforce, technical, scientific, construction and manufacturing activities in the country, construction materials, equipment and technology, produces statistical reports and gives information to the competent authorities and other institutions.

**Assists** in the proper formation and implementation of development projects and the utilization of natural resources. For the improvement of the quality of life and the protection of the environment, the TCG carries out research and studies and produces technical specifications, drafts of Bills, regulations and contracts for technical design studies and public works.

**Contributes** to technical education programs, to the advancement of national research and technology, and the development of the engineering workforce, in accordance with the development needs of the country.

**Keeps society informed** on subjects within its competence, through press releases, publications, announcements and any other suitable means in order to make relevant information easily accessible to the general public.

**Participates** in International Organizations, Unions and Federations of Engineers, develops bilateral relations with its counterpart organizations in other countries and organizes conferences, exhibitions and other events to advance its aims.

**Carries out** surveys, appraisals, valuations, arbitration on all matters related to the planning and construction of technical works.

In relation to its members, the Technical Chamber of Greece:

**Organizes** and conducts examinations and awards professional licenses. It maintains the registrar and registration records for individual members and corporate entities.

**Strives** to secure equitable remuneration for the services provided by its members.

**Promotes** issues related to the employment, continuing education, social security and pension rights, and protection of the status of its members.

**Publishes** newsletters, information and technical bulletins and other material.

**Explores** new forms of professional organization and work for its members.

**Enforces** the code of ethics for its members, as provided in the law for its establishment.





# RECENT PROJECTS AND INITIATIVES

## Active Member of European and International Organizations

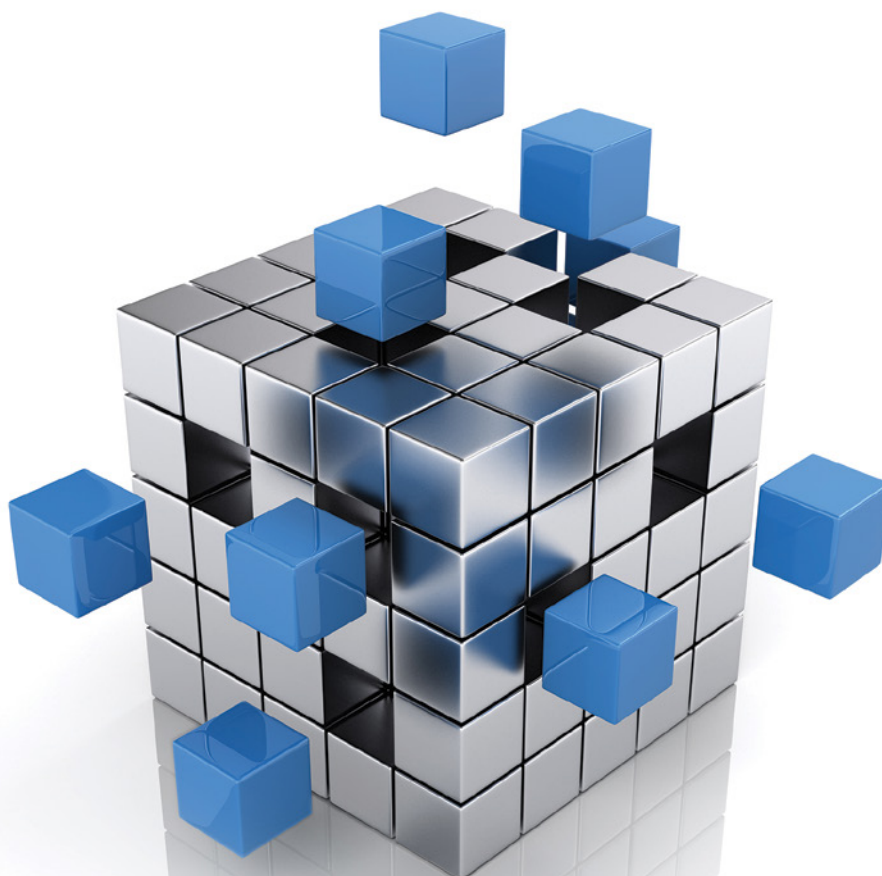
The Technical Chamber of Greece is an active member of the international engineering community and the **National Member** representing Greece in several International and European Organizations.



The following is an indicative list of TCG's participation in European and International organizations:

- ⚙️ TCG was one of the founding Members of the **World Federation of Engineering Organizations (WFEO)**. WFEO is the international, non-governmental organization, under the auspices of the United Nations Educational, Scientific and Cultural Organizations (UNESCO), representing the engineering profession worldwide. WFEO brings together national engineering organizations from over 90 nations and represents some 20 million engineers from around the world.
- ⚙️ TCG is the National Member representing Greece in the **World Energy Council (WEC)**. WEC, with more than 3,000 member organizations located in over 90 countries, actively supports intergovernmental organizations, governments and companies to deliver sustainable energy systems ranging from renewables to fossil fuels. By its membership TCG aims to promote sustainable energy development in Greece. As a member of the WEC network, it is committed to representing the Greek perspective in regional and global energy debates and be part of the global energy dialogue.
- ⚙️ TCG is the National Member in the **European Federation of National Engineering Associations (FEANI)**, representing 3.5 million professional engineers in 35 European countries. The **EUR ING title** delivered by FEANI, is a title designed as a guarantee of competence for professional engineers, in order
  - to facilitate the movement of practicing engineers within and outside the geographical area represented by FEANI's member countries and to establish a framework of mutual recognition of qualifications in order to enable engineers who wish to practice outside their own country to carry with them a guarantee of competence

- to provide information about the various formation systems of individual engineers for the benefit of prospective employers
  - to encourage the continuous improvement of the quality of engineers by setting, monitoring and reviewing standards
- ⚙️ TCG is a member of the **European Council of Engineers Chambers (ECEC)** representing the professional interests of Chartered Engineers at the EU level. During the period 2010-2012 TCG held the elective office of ECEC Secretary General. ECEC Members are national Chambers or other legally established public bodies representing licensed Chartered Engineers. ECEC is the umbrella organization for 16 European Chambers and their 300,000 engineering professional members.
- ⚙️ TCG is a Council Member of the **International Union of Architects (UIA)**. UIA is a non-governmental organization, a global federation of national associations of architects. UIA has grown to encompass the key professional organizations of architects in 124 countries and territories, and now represents, through these organizations, close to 1,300,000 architects worldwide.
- ⚙️ TCG holds the Presidency of the **International Federation of Surveyors (FIG)** for the period 2015-2018. FIG is a United Nations and World Bank recognized non-governmental organization of 121 national member associations representing all surveying disciplines. It provides an international forum for discussion and development aiming to promote the surveyors' professional practice.



# TCG e-INITIATIVES AT A GLANCE

## Electronic Services

The Technical Chamber of Greece, Technical Advisor to the Hellenic State and representative body of all Greek Qualified Engineers, implemented the building permit<sup>1</sup> electronic issuance system, which allows the electronic submission of permit requests-application and relevant documentation-by the builder's architect / engineer as well as the internal management control and approval of applications by Building Service staff and the immediate notification of the applying engineer.

This is the first interactive system of its kind in Greece, allowing the Engineers and the Public Administration staff to be linked in real-time. It was introduced based on the provisions of L.4030 / 2011 governing the procedure for issuing "planning permission" and is an implementation workflow tool with the following features:

- ✿ The system accepts applications for permits and all required documentation, including technical studies, in electronic form.
- ✿ The application is submitted to the appropriate Building Service Office according to the geographical location of the construction site for which permit is requested. Building Service staff members check and record their observations electronically and the applying engineer and citizen / owner are notified in real time.
- ✿ The permit is issued on the application's obtaining all required approvals, given the technical studies and additional documentation's completeness.
- ✿ The entire check process, history of changes and filing are kept electronically and are made available to the engineer, the owner, the competent Building Service Office and the Ministry for the Environment.
- ✿ The system also includes a building inspection request capability for the different stages of construction. The request is entered by the supervising engineer and the auditor in charge is drawn randomly, according to the location of the property. The process and the audit findings are available directly to the Building Services and the Ministry of Environment.
- ✿ Particular attention has been paid to the future provision for forwarding requests to other Agencies and Authorities, not related to Building Services, in order to facilitate searches and obtaining additional approvals where required.

---

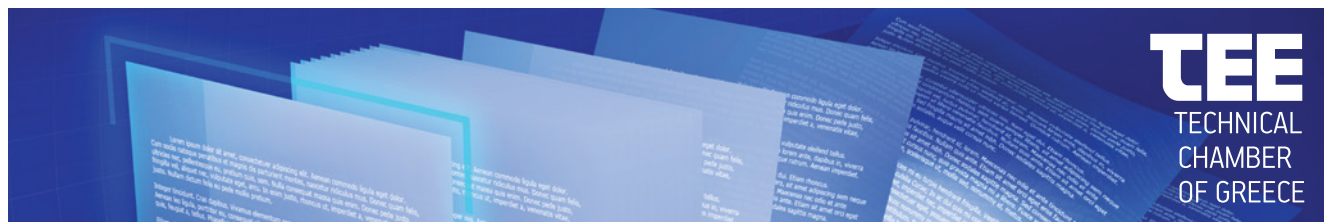
<sup>1</sup> Known, in Greece, as the "Urban Planning Permit"



The system has been tested by engineers and Services Building administrators, in several parts of the country, and has - so far - received excellent response. The Technical Chamber of Greece also created a nationwide network of engineers to support the Building Service administrators, at the initial stages of the system's operation.

It is expected that the use of the e-permit system will limit bureaucracy thus responding to requests of Greek Engineers, who for years have been overwhelmed with inefficient and time-consuming procedures when applying for building permits. It will equally free public administrators' time so that they can concentrate on the essence of their work to better serve the citizen. Limiting illegal and unauthorized building will be another positive effect of the system's use with far reaching consequences for the environment, the country and the safety and quality of life of its citizens.

## “Engineer’s Legal Manual- Legislation and Engineering Regulations” - a Digital Law Library



An important new initiative of the Technical Chamber of Greece and **a practical tool for the practicing Engineer.**

## Authorized Energy Auditors



On-line examinations for Building Energy Auditors.

## “Digital ID of Buildings “



A user friendly system Facilitating the interaction of citizens and Engineers with State authorities.



# EU INITIATIVES AND CO-OPERATION PROJECTS

TCG as the advisor of the Ministry of Environment, Energy and Climate Change and the Central Union of Municipalities of Greece (KEDE) closely follows all new developments in European sustainability policies and initiatives such as the **Covenant of Mayors (CoM)**.

As the **CoM National Coordinator** promotes the CoM among municipalities in Greece and the development of Sustainable Energy Action Plans (SEAPs) as the primary means of achieving the reduction of CO<sub>2</sub> emissions. TCG has the capacity and know-how to provide administrative and technical support to KEDE's members in the process of local energy planning and its implementation.



⚙️ TCG participated in the IEE co-funded EU projects since 2012



#### **SEAP-PLUS (2012-2014)**

A project that enhanced the “Covenant of Mayors” (CoM) results. It brought more Signatories and Covenant Supporters or Coordinators in CoM, assisted and helped them develop effective and Sustainable Energy Action Plans (SEAP) and promoted the cooperation and dialogue among Local and Regional Authorities and Energy Stakeholders.



#### **BUS-GR(2012-2013)**

Part of the EU BUILD UP Skills Initiative to assess the training needs of the construction industry workers, vis-à-vis energy efficiency and renewable energy systems (RES) in buildings.

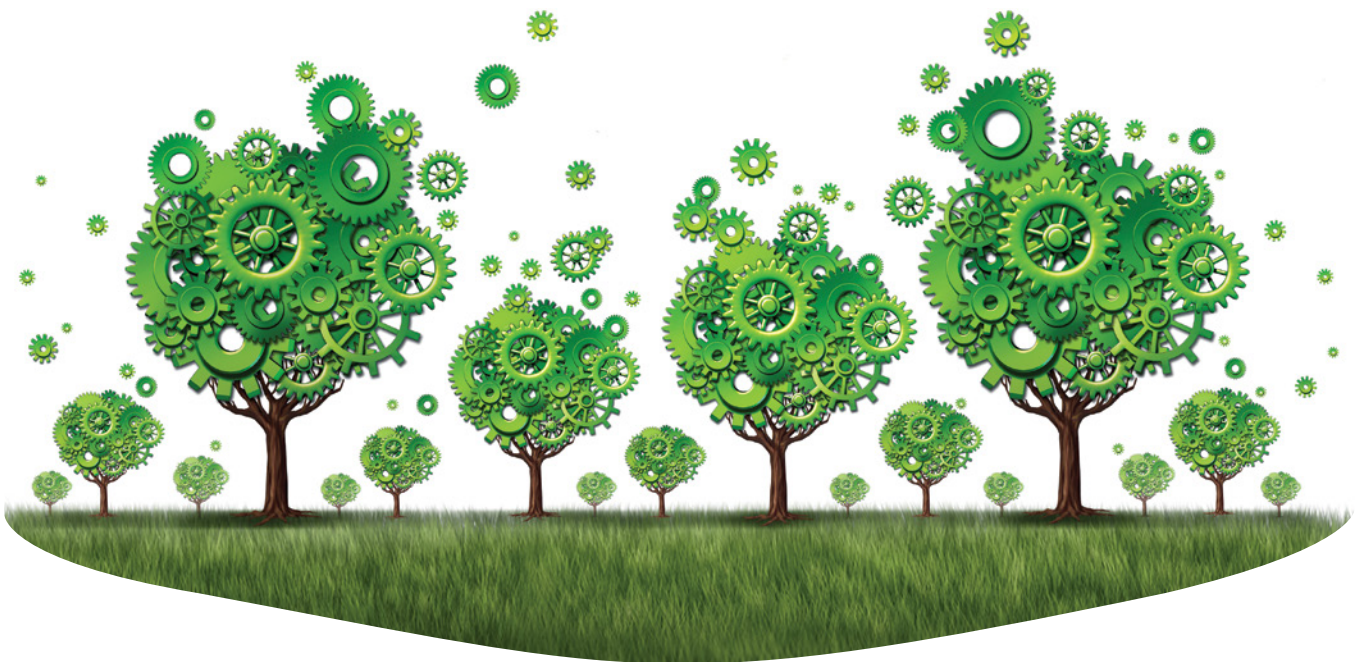


#### **UPSWING(2014-2017)** - Upgrading the Construction

Sector Workforce training and qualification in Greece.

The project aims to boost construction workers' knowledge and skills on energy efficiency in construction in order to meet the 2020 energy and climate targets for Insulation technicians, aluminum & metal constructions craftsmen and installers – maintainers of burners.

⚙️ TCG also cooperates with the IEE co-funded project DATA4ACTION with the aim of creating an Energy Data Observatory for Greece within TCG through the MoU signed with Energy Stakeholders.







**[www.tee.gr/en](http://www.tee.gr/en)**

For more information please contact:

**Directorate of European Affairs and International Relations**

4, Nikis str., 105 63 Athens Greece

Tel. (+30) 210 32 91 350, (+30) 210 32 91 351, (+30) 210 32 91 613

e-mail: [greok@central.tee.gr](mailto:greok@central.tee.gr)